



metkon[®]
Technology behind Specimen



MOUNTING ECOPRESS 102/202

ECOPRESS 102/202 are high capacity, state of the art automatic mounting presses having advanced software with programmable coloured HMI touch screen controls.



AUTOMATIC MOUNTING PRESS

DESIGN & OPERATION

All ECOPRESS models have electrohydraulic operation which do not require air. The sample is ejected fast and very smoothly. All hydraulic components are housed in an ABS cabinet which is ergonomically designed.

ECOPRESS 102/202 have preprogrammed moulding sequences built-in (factory set) from which you can choose according to your own applications. You only need to place the sample in the mould, select the program number for your specific application and depress the "Start" button. That's it! ECOPRESS does the rest for you! After pressing the start key, the fully automatic program sequence is executed with the preselected parameters. The pressure, heating and cooling are automatically controlled and the total cycle time of a complete cool mount takes 7 to 9 minutes. The parameters can be changed and adjusted during the mounting process.

ECOPRESS 102/202 has additional capacity to store up to 99 operator-created programs. User-friendly program data and instructions are displayed on a large touch screen LCD.



Consistent results with programmable parameters



ECOPRESS

102/202

ECOPRESS 102/202 are high capacity, state of the art automatic mounting presses having advanced software with programmable coloured HMI touch screen controls. Robust bayonet closure allows for quick and safe operation.

Wide selection of mould assemblies from 25 to 50 mm in diameter are available. Two mounts can be produced simultaneously with the use of an intermediate ram. ECOPRESS 202, available with dual cylinder can produce four mounts at a time offering a perfect solution for labs with high specimen throughput.

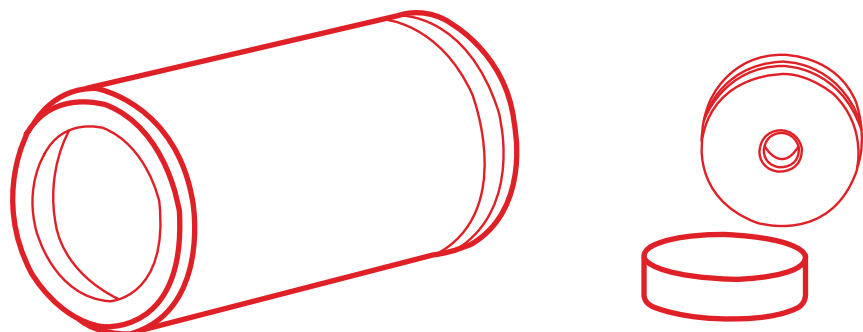


Mould cover

FEATURES

Heating & Cooling

The high efficiency combined heater/cooler is housed in the upper part of ECOPRESS. With 1650 W of thermostatically controlled heating power, molding times are kept to a minimum. At the end of the heating cycle, the cooling water is automatically switched on and will turn off once the "Cooling Temperature" is reached. When the stand-by mode is switched on, pre-warming maintains a constant ready to use temperature, thus reducing the cycle time. Three cooling modes are available as "Standard", "Slow" and "Based on Time". Slow cooling is for thermoplastic resins which require far longer cooling times for best mount clarity. A stainless steel "Recirculating Cooling Unit" is optionally available.





Easy Access

Mould Assemblies

ECOPRESS mounting presses can accept several mould sizes from 25 mm to 50 mm. All moulds can be exchanged simply and easily. An intermediate ram can be used to double the production capacity. Insulated mold closure protects the operator. Optional Chamfered Rams provide a beveled face around the edge of the mounted specimen and eliminate sharp edges. The chamfered rams increase the efficiency of grinding and polishing process and saves time and consumables. It also prevents the risk of damage in the moulds caused by hard specimens.

Easy-to-use dovetail connection for the lower ram eliminates the need for mechanical fastening.

Robust bayonet mold closure maximizes safety and eliminates the need to clean cylinder threads before closing. There will be no need to replace molds because of worn threads in the future.



Bayonet Closure



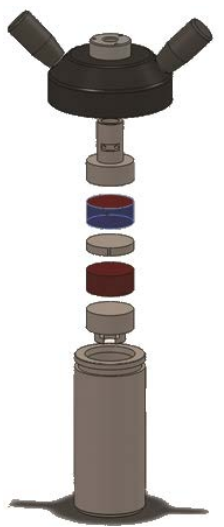
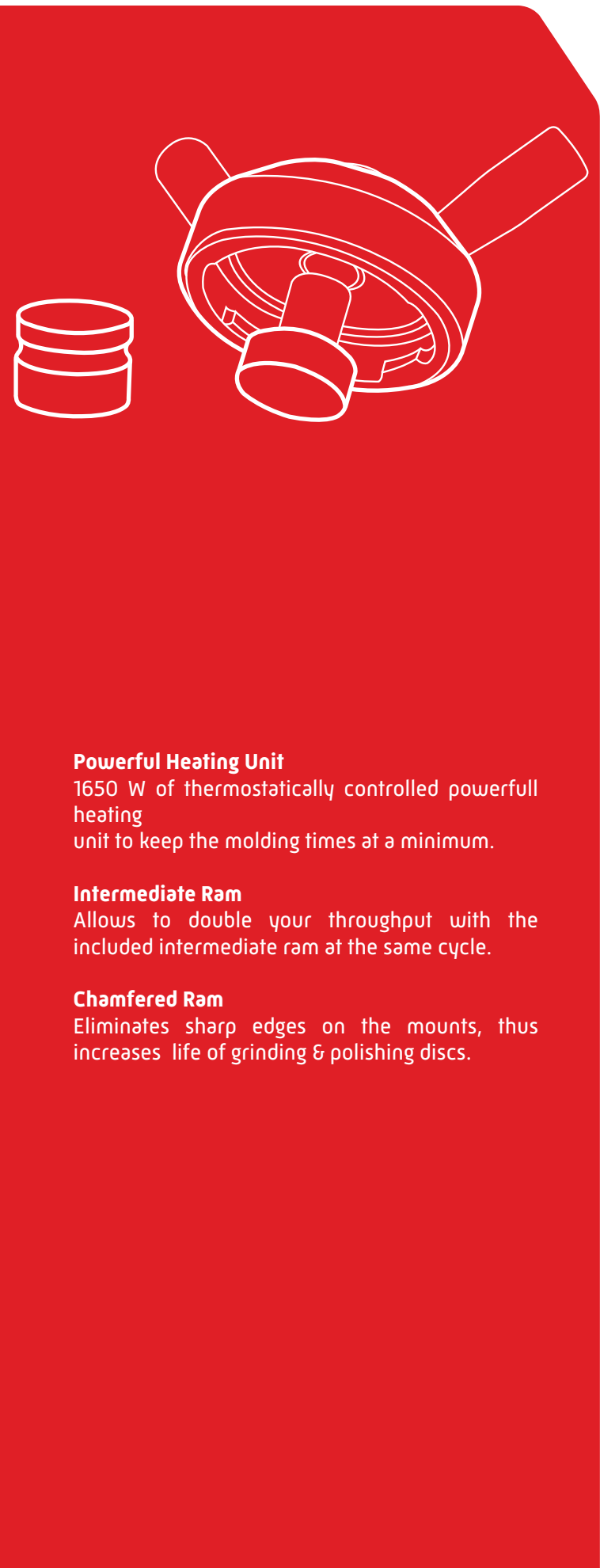
Insulated Mould Closure



Emergency Stop for Operator Safety



Powerful Heating Unit



Mould cylinder, upper ram, lower ram Intermediate Ram

Powerful Heating Unit

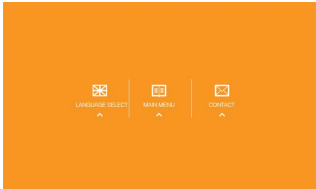
1650 W of thermostatically controlled powerful heating unit to keep the molding times at a minimum.

Intermediate Ram

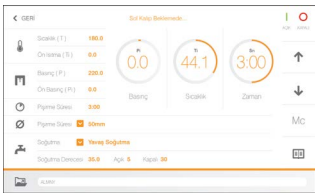
Allows to double your throughput with the included intermediate ram at the same cycle.

Chamfered Ram

Eliminates sharp edges on the mounts, thus increases life of grinding & polishing discs.



HMI touch screen controls with various mounting methods and database with mounting programs and maintenance monitoring



Easy and comfortable operation

SPECIFICATIONS

25 11 - ECOPRESS 102

Programmable Automatic Mounting Press 7" HMI touch screen control, with Siemens PLC control unit, programmable with colored LCD display, program based mounting sequences, electro hydraulic pressure (requires no air), pressure up to 300 bar, temperature up to 200 °C, operation time upto 35:00 minutes, short cycle time, thermostatically controlled heating power of 1650W, automatic cooling cycle with three modes of cooling rates(standard cooling, slow cooling and based on time), programmable preheating and preloading, stand-by temperature, selectable mould sizes from 25 mm to 50 mm, easy to close bayonet closure, audible warning signal, ready for operation. 230 V, 1-phase, 50/60 Hz. Mould assemblies are ordered separately. Includes a standard set of mounting consumables composed of 2 different hot mounting compounds; 1 kg of each and a total of 2kgs.

25 12 - ECOPRESS 202

Programmable Automatic Mounting Press with dual cylinders 7" HMI touch screen control, with Siemens PLC control unit, programmable with colored LCD display, program based mounting sequences, electro hydraulic pressure (requires no air), pressure up to 300 bar, temperature up to 200 °C, operation time up to 35:00 minutes, short cycle time, thermostatically controlled heating power of 2X1650W, automatic cooling cycle with three modes of cooling rates(standard cooling, slow cooling and based on time), programmable preheating and preloading, stand-by temperature, selectable mould sizes from 25 mm to 50 mm, easy to close bayonet closure, audible warning signal, ready for operation. 230 V, 1-phase, 50/60 Hz. Mould assemblies are ordered separately. Includes a standard set of mounting consumables composed of 2 different hot mounting compounds; 1 kg of each and a total of 2 kgs.

Mould Assemblies

- 26 01-03** - Mould assembly, Ø1" with intermediate ram
- 26 02-03** - Mould assembly, Ø1 1/4" with intermediate ram
- 26 03-03** - Mould assembly, Ø1 1/2" with intermediate ram
- 26 04-03** - Mould assembly, Ø25 mm with intermediate ram
- 26 05-03** - Mould assembly, Ø30 mm with intermediate ram
- 26 06-03** - Mould assembly, Ø40 mm with intermediate ram
- 26 07-03** - Mould assembly, Ø2" with intermediate ram
- 26 08-03** - Mould assembly, Ø50 mm with intermediate ram

Accessories for ECOPRESS

GR 1363 - Recirculating Coolant System composed of 40 liters stainless steel cooling tank, 24V recirculating pump and connection hoses, etc.

GR 1397-00 - Water Filtering and Pressure Regulator System for city water inlet.

Keeps the water pressure at the appropriate level and protects from sudden pressure spikes. Filtering out impurities in the water and prevents calcification.

YM 3824-00 - Spare Siliphos Cartridge Filter
(for Water Filtering and Pressure Regulator System [GR 1397-00])

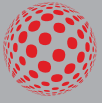
Spare Part Kit for ECOPRESS

GR 1967 - Recommended Set of Spare Parts, ECOPRESS 102/202

* Other voltages and frequencies available upon request.
Please state when ordering. All specifications are subject to change without notice.

SPECIFICATIONS

ORDER NO	25 11	25 12
MODEL NO	ECOPRESS 102	ECOPRESS 102
Max. Pressure, bar	300	300
Max. Temperature, C	200	200
Heating Power, W	1650	2x1650
Water Cooling	Yes	Yes
Slow Cooling	Yes	Yes
Operation	Programmable/Hydraulic	Programmable/Hydraulic
Display	7" HMI touch screen LCD	7" HMI touch screen LCD
Mould Assembly, mm.	25-50	25-50
Size W x D x H, [cm]	36x 55x 48	49 x 55 x 48
Weight, [kg]	38	54
Mains, [V]	1 phase, 230V, 50Hz. AC	1 phase, 230V, 50Hz. AC



metkon[®]
Technology behind Specimen



METKON INSTRUMENTS INC.

Demirtas Dumrupinar
Organize Sanayi Bolgesi
Ali Osman Sonmez Cd.
No: 14 Bursa | TURKEY
Phone : +90 (224) 261 18 40
metkonsales@metkon.com

METKON USA INC.

325 New Neely Ferry Rd Suite E2,
Mauldin, SC 29662 Greenville
Phone: (864) 399-9009
sales-us@metkon.com